

M O D U L E

swelectes.com

M O U N T I N G

S T R U C T U R E S

MMS



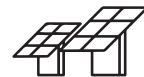
40 YEARS & 1 GW+
EXPERIENCE IN GLOBAL
ENERGY MARKET



PUBLIC LISTED
COMPANY IN INDIAN
STOCK EXCHANGES



IMS CERTIFIED
COMPANY



1 GW STATE-OF-THE-ART
SOLAR PV MODULE
MANUFACTURING FACILITY



0.5 GW MMS &
ELECTRICAL BOS
MANUFACTURING
FACILITY



EPC SOLUTION PROVIDER
AND INDEPENDENT
POWER PRODUCER



SOLAR ENERGY STORAGE
& SOLAR-WIND HYBRID
ENERGY STORAGE SYSTEMS

MMS & Electrical BOS - State-of-art 0.5 GW Manufacturing facility at Salem, Tamil Nadu

SWELECT offers a complete range of Electrical and Mechanical Balance of Systems (BOS) from its state-of-the art manufacturing facility in Salem, including Module Mounting Structures (MMS), AJBs, ACDBs, and DCDBs. The plant's roll forming machines have an annual production capacity of 0.5 GW of MMS and a lifetime of over 20 years. This facility also provides power products, including servo stabilizers, isolation transformers, electrical and general-purpose switchboards, and distribution boards.



Module Mounting Structures

Complete and customised range of C Purlins, Hat Purlins and other sheet metal structures required for roof top, ground mount, as well as specialised solar power projects.



SPGS (Solar Power Generation System) Kits

Packaged solutions consisting of solar PV modules, Solar Inverters, Electrical and Mechanical BOS along with Cables, Electrical Protection systems, Data Monitoring Systems.



Electrical BOS

All range of Array Junction Boxes, String Combiner Boxes, AC & DC Decoupling circuits for various solar applications.



Innovation Hub

Development and deployment of various tools, products and solutions that address the new and emerging market requirements.



Power Products

Servo Stabilisers, Isolation Transformers, Electrical & General-purpose Switchboards & Distribution boards



C-ROLL FORMING MACHINES
HAT ROLL FORMING MACHINES



COMPUTERIZED BENDING MACHINES

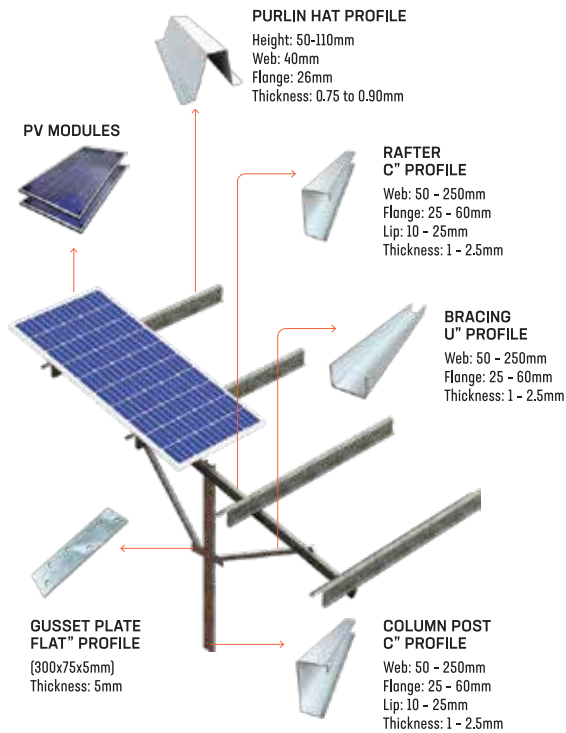


CNC TURRET PUNCH PRESS

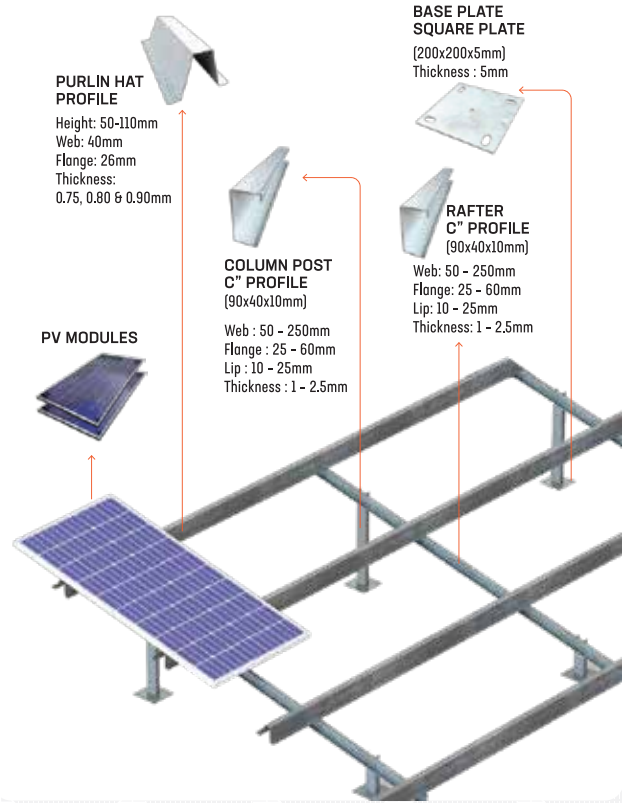
Our PV module mounting solutions have been designed to fit an extensive range of PV modules and offer optimum dimensioning, cost-effectiveness, and outstanding reliability.

swelectes.com

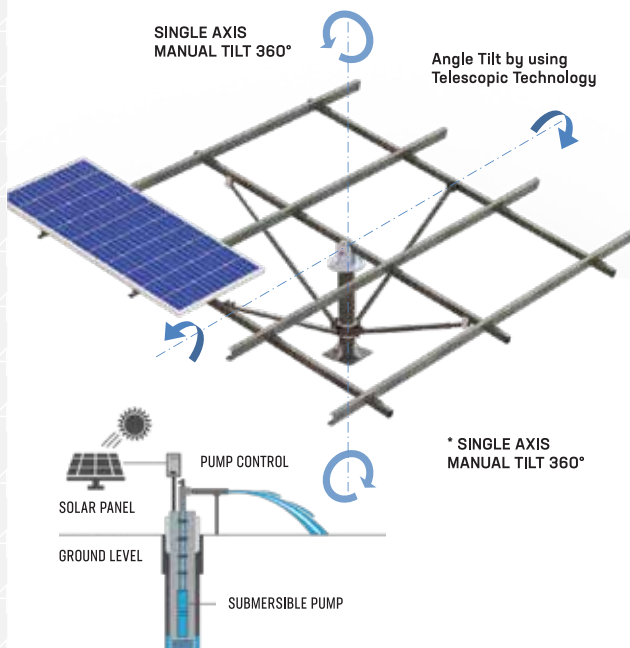
GROUND MOUNT



FLOOR MOUNT

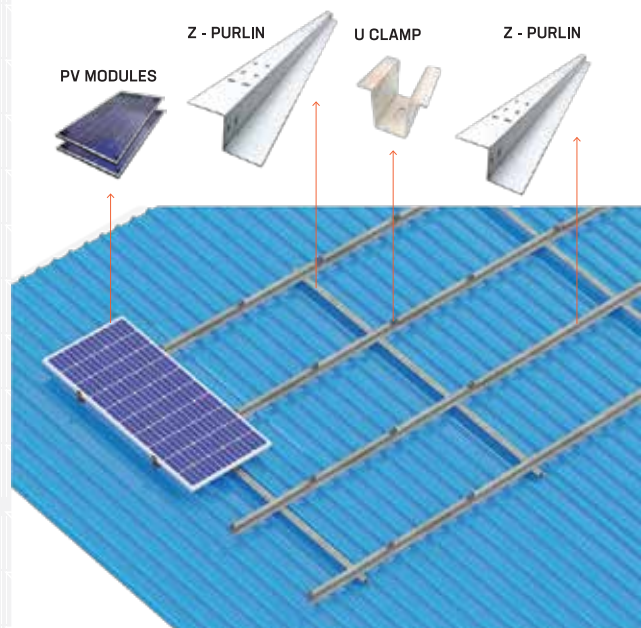


SOLAR WATER PUMP STRUCTURE



A Solar Water Pump Structure consists of a solar panel array that powers an electrical motor which in turn powers a bare or surface pump. The water is often pumped from the ground into a storage tank.

SHEET ROOF MOUNT



Aluminium rail & clamps For Trapezoidal Sheet roof structures

SALIENT FEATURES OF OUR MMS

- Corrosion resistant AZ-150 steel
(High quality National & International brands)
- Structure inclination based on latitude and longitude
- Expected life time: 25 years
- Capability to withstand wind velocity for different zones of the country based on IS 875 Part-3 (wind load standard)
- Stability verified by Solid works Stimulation or STAAD Pro
- Column posts can be customized with HDG steel for ground mount projects
- Any configuration of MMS can be provided
- Customized designs also available



SWELECT has an installed base of over **500 MW MMS** of various configurations and is well suited to meet your specifications and requirements for any type of Solar Installations.

For a comprehensive
Solar Solution:

SWELECT ENERGY SYSTEMS LIMITED

SWELECT HOUSE

No 5, Sir P. S. Sivasamy Salai, Mylapore,
Chennai - 600 004. Tamil nadu, India.
info@swelectes.com | +91 44 24993266

MMS & BOS Manufacturing

SWELECT Energy Systems Limited

S.No.58/3 Nachiyar, Salem Main Road,
Veerappan Palayam PO, Idappadi - 637 105, Salem

Solar PV Module Manufacturing

SWELECT HHV SOLAR PHOTOVOLTAICS PRIVATE LIMITED

No. 169, 166, Sembagoundan Pudur,
Kuppeplayam Village, Coimbatore, Coimbatore
North Taluk, Coimbatore District Tamil Nadu- 641 107.

Global Offices:

SWELECT Energy Systems PTE Limited

No.2, Kallang Pudding Road 02-12
Machtech Building, Singapore - 349 307

SWELECT Inc

2773B, Hartland Road, Falls Church,
Virginia, United States - 22043



swelectes.com